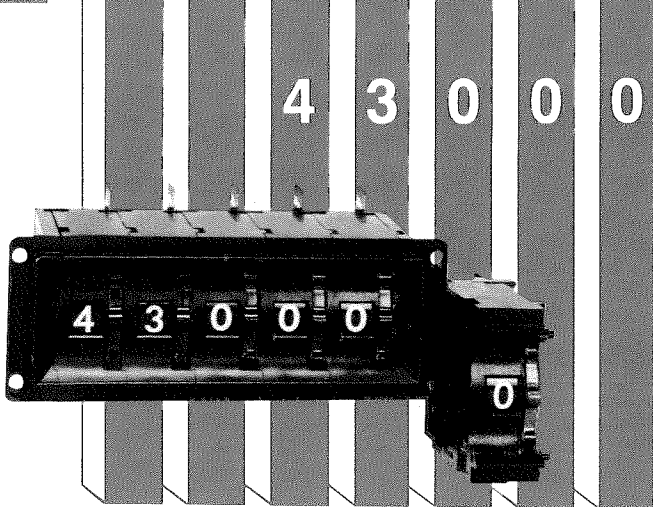


Series Miniswitch®



10 standard dial positions
Rear mounted
Switch O.D. size 12.70 (.500) wide x
30.30 (1.193) high
Distributor or factory direct

DESCRIPTION

Series 43000 Miniswitch® is economically priced and has been engineered to incorporate many outstanding options only found in much higher priced switches. Two examples are the LED lighting and the snap-together feature of modules to make up your desired assembly without the use of tools.

FEATURES

- *Special dial characters
- Field installable dial stops
- *Special markings on switch case and spacers
- 6.35 (.250) and 12.70 (.500) spacers
- Available in most popular codes off the shelf through distribution
- LED replaceable lighting
- *Optional window against dust and debris
- *Provisions for mounting components
- Field or factory assembled to customer specifications
- *See switch parameters for details or consult factory.

SPECIFICATIONS

MECHANICAL

Operating force: 4 to 10 ounces.
Life: Over 500,000 detent operations at 25 °C.
Weight: .35 ounce per module (approx.).
Standard finish and color: Molded matte black.

ELECTRICAL

Rated electrical loads: 0.125 amps at 28 VAC or 28 VDC. Non-switching current: 3 amps max.
Contact resistance: 100 milliohms max. initial.
Dielectric strength: 500 VRMS.
Terminations: Printed circuit board for solder termination is standard; pin terminals are optional.
Mounting hardware torque: 2 inch-pounds (2.3 kilogram-centimeters) max. on mounting screws.

LIGHTING (OPTIONAL)

Internal LED standard colors: Clear and Red. 20 milliamps recommended current (30 milliamps max.).
 Voltage drop across LED: 2.2V.

ENVIRONMENTAL

Operating temperature range: -20 °C to + 65 °C.
Storage temperature range: -40 °C to + 85 °C.
Moisture resistance: 1 megohm minimum insulation resistance after 10 days at 95% relative humidity.
Shock: 100 G's, 6 milliseconds duration, sawtooth.
Vibration: 15 G's at 70-2000 Hz; .06" double amplitude at 10-70 Hz.

MATERIALS:

Printed circuit board: Epoxy fiberglass.
Contact material: Precious metal alloy
Structural parts: Polycarbonate and acetal thermoplastics.
Detent spring: Stainless steel.

IMPORTANT NOTICE

Do not allow flux or cleaning agent to enter switch. Use only solution of 40% isopropyl alcohol in distilled water for cleaning agent. For additional information about recommended cleaning method, contact Digitran.

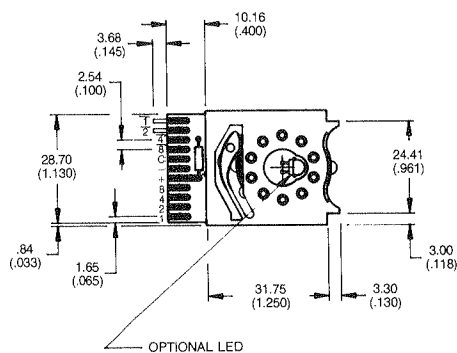
TRUTH TABLE CODES SERIES 43000

Truth Tables Positions	001	002	003	004	006	007	008	011	013	014	016	017	021	022	023	024	025	038	039	041	043	047	048	049	050
Code Series	2	8	8	8	8	8	10	10	10	10	10	10	10	10	10	10	10	10	10	12	12	16	16	16	16
• 43 = 43000	•	*	—	**	—	*	•	—	**	•	**	•	—	****	—	•	****	—	—	—	—	—	—	—	—
PC Terminations per Truth Table Code	S P W	S P W	— — —	S P W L	— — —	S P W	S P W	— — —	S P W L	S P W	S P W	S P W	— — —	S P W	— — —	S P W	S P W	— — —	— — —	— — —	— — —	— — —	— — —	— — —	— — —

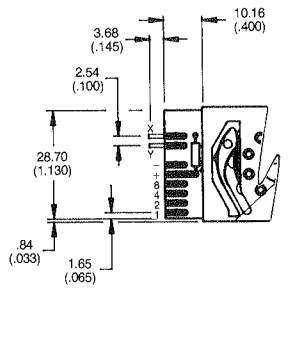
*Octal code achieved by dial stops.

**Printed circuit board code is BCD plus complement.

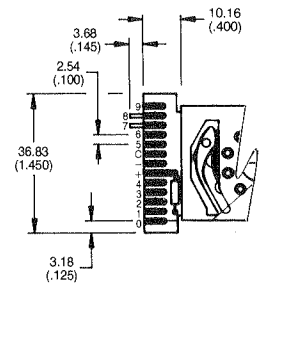
****Printed circuit board code is 9's complement plus complement.



BCD + COMPLIMENT

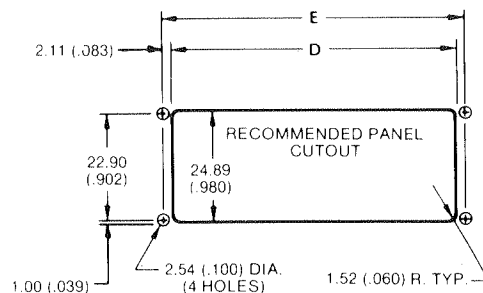
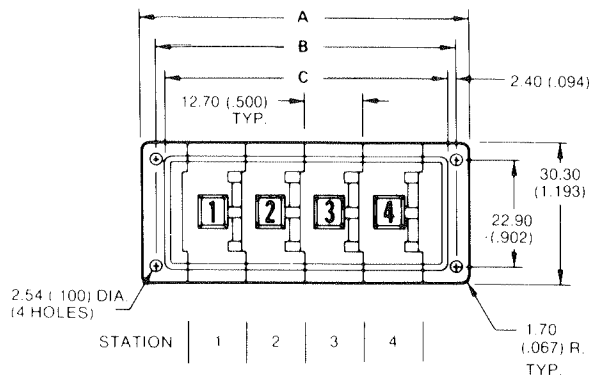
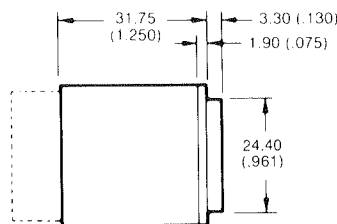
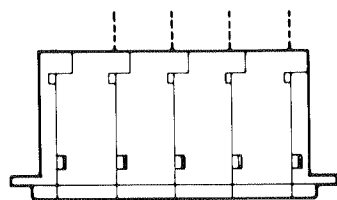


BCD TRUE/NOT TRUE



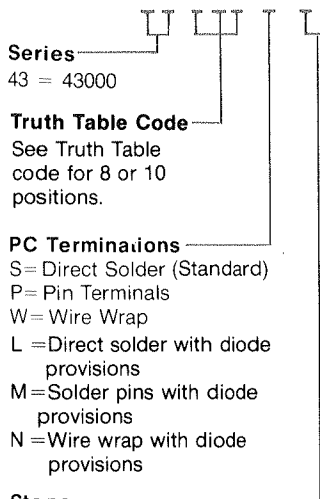
SINGLE POLE DECIMAL

TYPICAL TERMINAL AND ELECTRICAL OUTPUT DETAILS SERIES 43000 MINISWITCH®



How to order standard switch modules

See page 79 for Assembly Ordering Instructions
 All spaces must be filled for a complete part (switch) number
 Example: 43/017/P/NS/C/B/G



Lighting*
 COLOR LAMP VOLTAGE
 O = No Lighting
 E = Clear 5
 F = Clear 14
 G = Clear 28
 H = Red 5
 J = Red 14
 K = Red 28
 N = Red No Resistor
 R = Clear No Resistor

Color**
 B = Matte black case, glossy black dial, white characters.

Dial options
 S = Standard dial characters
 B = -, + repeating
 C = 0, 5 repeating

Stops
 NS = No stops
 For stops show first and last position (i.e.: 3 9 the dial will now read 3 through 9)

Not all options are available in all series or codes. Some tooling charges may be required.

*When ordering a lighted switch from this series the lighting is internal.
 **For nonstandard colors and combinations consult factory.

Notes 1 — For nonstandard switch options and features not covered in the how to order chart, see modified ordering instruction section, page 78, or consult factory.

RECOMMENDED ASSEMBLY PANEL CUTOUT DIMENSIONS

NO. OF MODULES	A	B	C	D	E
1	32.0 (1.26)	27.7 (1.09)	22.9 (.90)	23.5 (.93)	27.7 (1.09)
2	44.7 (1.76)	40.4 (1.59)	35.6 (1.40)	36.2 (1.43)	40.4 (1.59)
3	57.4 (2.26)	53.1 (2.09)	48.3 (1.90)	48.9 (1.93)	53.1 (2.09)
4	70.1 (2.76)	65.8 (2.59)	61.0 (2.40)	61.6 (2.43)	65.8 (2.59)
5	82.8 (3.26)	78.5 (3.09)	73.7 (2.90)	74.3 (2.93)	78.5 (3.09)
6	95.5 (3.76)	91.2 (3.59)	86.4 (3.40)	87.0 (3.43)	91.2 (3.59)
7	108.2 (4.26)	103.9 (4.09)	99.1 (3.90)	99.7 (3.93)	103.9 (4.09)
8	120.9 (4.76)	116.6 (4.59)	111.8 (4.40)	112.4 (4.43)	116.6 (4.59)
9	133.6 (5.26)	129.3 (5.09)	124.5 (4.90)	125.1 (4.93)	129.3 (5.09)
10	146.3 (5.76)	142.0 (5.59)	137.2 (5.40)	137.8 (5.43)	142.0 (5.59)

NOTES:

1. Drawing tolerances: .X = ±.8 (.03), .XX = ±.25 (.010).
2. Prime dimensions are metric.

WINDOW AND CHARACTER DIMENSIONS

Positions	Window Dimensions		Max. character Height	Visual Comparisons
	H	W		
8	6.04 (.238)	7.36 (.290)	5.08(.200)	3
10	6.04 (.238)	7.36 (.290)	5.08(.200)	3